

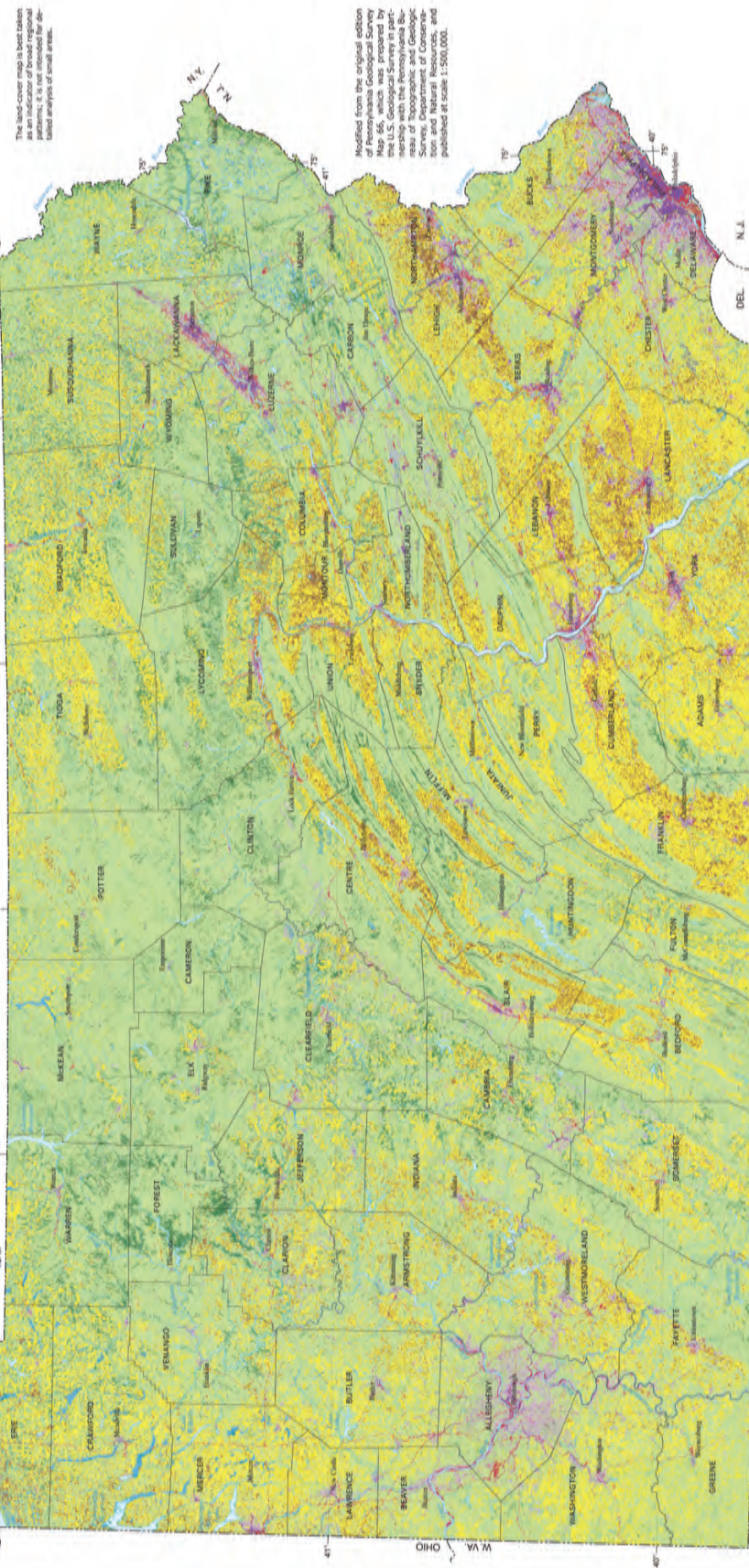
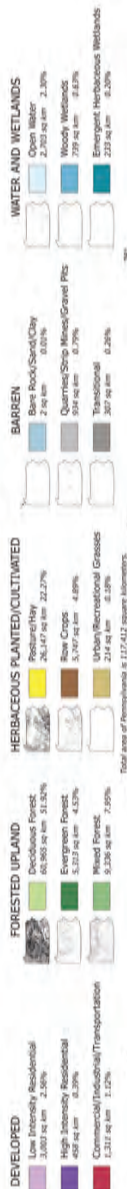
Activity 3: Land-cover Map

MAP 66  
TUMULOUS EDITION



BUREAU OF TOPOGRAPHIC AND GEOLOGIC SURVEY  
DEPARTMENT OF CONSERVATION AND NATURAL RESOURCES

LAND-COVER MAP OF PENNSYLVANIA



The land cover map is best taken as an indicator of broad regional patterns. It is not intended for detailed analysis of small areas.

Modified from the original edition of Pennsylvania Geological Survey Map 66, which was prepared by the U.S. Geological Survey in partnership with the Pennsylvania Geological Survey, Department of Conservation and Natural Resources, and published at scale 1:500,000.

The land cover shown on this map was produced from the 1992 National Land Cover Data (NLCD) and the 1992 National Wetlands Inventory data, which were used to create the National Wetlands Inventory (NWI) data. The NLCD may be used for a variety of regional applications, including watershed management, environmental inventories, transportation modeling, fire risk assessment, and land management. For more information on the NLCD, see <http://landcover.usgs.gov/natlcover.php>.



Full-size map located in back pocket.